



**PIONEER IN ...**  
**BUILDING TRUST**

AND IN **EXISTENCE**  
**SINCE 2015**



## COMPANY PROFILE

This is profile of Navyug Enterprise Company is private firm. Navyug Enterprise affiant services in the field of geotechnical engineering, exploration of soil, investigation & survey (Filed & Labs) Core drill, SPT, CBR, UDS Tests, Rock mining & Foundation drilling (Coring & Non-coring), Material testing, & grouting strengthening (Rock & Soil), Piling work, Solar project's foundation, investigation surveying construction of roadways, build-ing, and other civil & mechanical engineering work sins 2020.

The firm has own engineers, operators, consultant and permanent working staff with 24 hours working capacity.

What distinguish the Company is its entrepreneurial spirit, innovative thinking and respon- siveness to clients evolving needs. Business policies are defined by the ethics, discipline, professionalism and a strong desire to excel We believe in the aforesaid saying vi.

## TYPES OF WORK

Drilling  
Piling  
Core Drilling  
Soil Testing  
Cable Anchoring

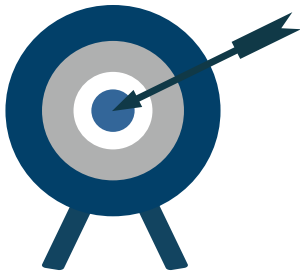


## MISSION

To deliver superior construction and infrastructure solutions through innovation, sustainability, and a client-centric approach, contributing to the growth and development of modern India.



## VISION



To be a leading provider in the construction and infrastructure industry, recognized for excellence, reliability, and sustainability, shaping a better future for communities and industries.

## OUR RESPECTED CLIENTS



WE FUEL AMAZING

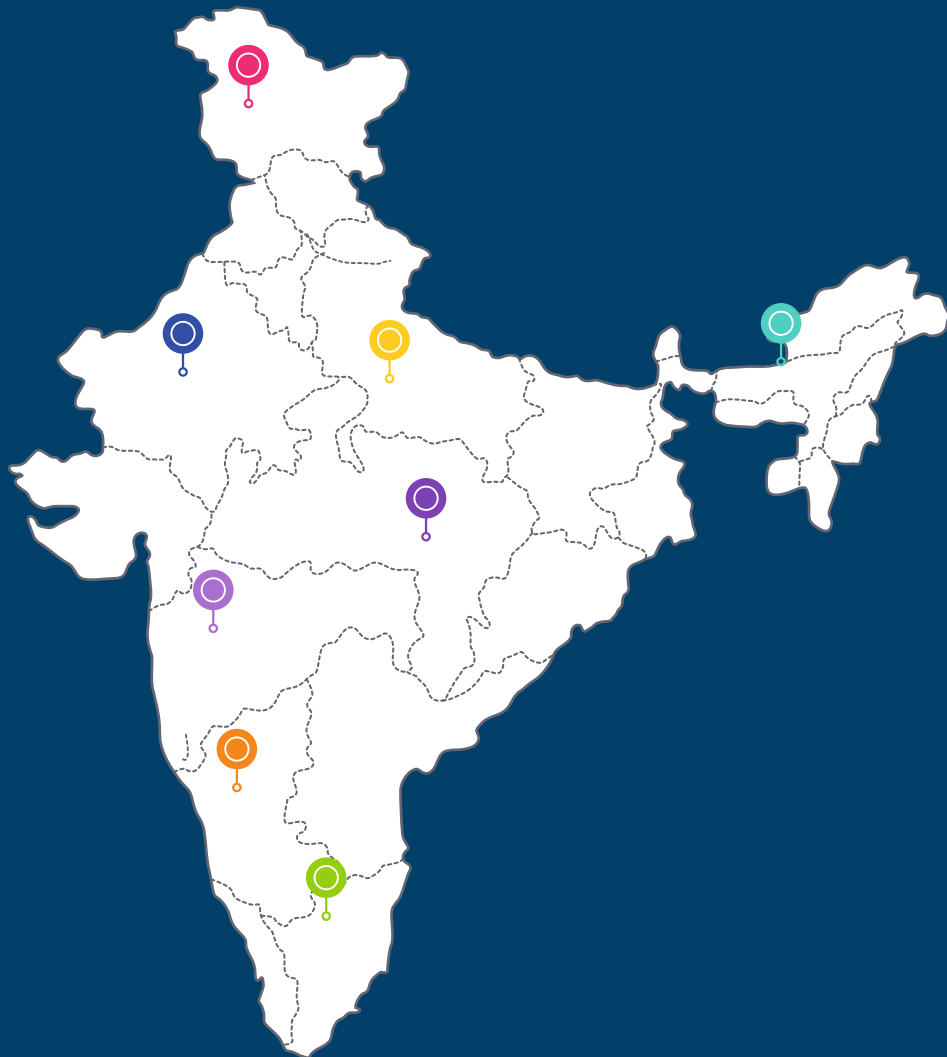


DILIP BUILDCON LIMITED  
INFRASTRUCTURE & BEYOND





## Our Domestic Footprint



- |               |             |              |
|---------------|-------------|--------------|
| ● Gandhinagar | ● Ahmedabad | ● Amreli     |
| ● Amirgadh    | ● Vadodara  | ● Junagadh   |
| ● Palanpur    | ● Bharuch   | ● Porbandar  |
| ● Dhanera     | ● Surat     | ● Mundra     |
| ● Vadgam      | ● Navsari   | ● Bhuj       |
| ● Mehsana     | ● Vapi      | ● Gandhidham |





## 200 ATC COMPRESSOR

2000 CFM AIR PRESSURE MACHINE



## MOUNTING HIGH PRESSURE DRILLING RIG

2000 CFM AIR PRESSURE MACHINE



PROJECT

## SOLAR

MORE

PILING FOR SOLARS  
REVENUE - 65,000



PROJECT

## DAMS

MORE

DRILLING AND PILING  
REVENUE - 2,842



PROJECT

## AFRICULTURE

MORE

DRILLING OF BOREHOLES IN DIFFRENT V  
REVENUE - 6,581



## **DRILLING MACHINE**

FOR DRILLING AND SOIL TESTING



## **MINI DRILLING ROBOT**

FOR DRILLING AND MOUNTING  
200 METER DEPTH  
WORKES IN COMPLEX PLACES AND  
REQUIRES LESS AREA

# **TOTAL EXPERIENCE**



9 YEARS OF EXPERIENCE

700 PILES AND DRILLS EVERY YEAR

200 AVERAGE REVENUR PER DAY

RCC Road 35KM

Domar Road 100KM

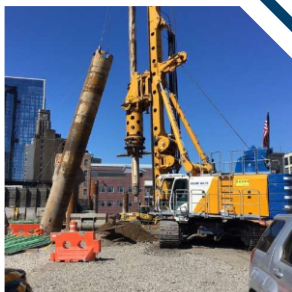
Pipeline -1500

RCC water tank

Bungalow - 75

Flat Construction - 5

## TYPE OF WORK DONE



## TURNKEY PROJECTS



### Bungalow Construction

A bungalow is a type of house or cottage that is usually single-story or has a half story built into the roof. Bungalows are often small in size and have a compact footprint. They are known for their low-pitched roofs, open floor plans, and front porches.



### Flat Construction

Flat construction is a step-by-step process that begins with site preparation, including clearing and leveling the land. The foundation is then laid to provide a stable base for the structure. Structural work follows, involving the construction of columns, beams, and slabs to form the building's framework. Walls, staircases, and partitions are built during the masonry phase.



### RCC water tank

An RCC (Reinforced Cement Concrete) water tank is a durable and robust structure designed for the storage and supply of water. Constructed with a combination of cement, sand, aggregate, and steel reinforcement, it ensures high strength and resistance to environmental factors. RCC water tanks are commonly used for residential, commercial, and industrial purposes due to their ability to withstand pressure and prevent leakage.



## TURNKEY PROJECTS



### Water Line

A water line is a pipe or network of pipes designed to transport water from a source to various destinations for residential, commercial, industrial, or agricultural use. These lines are typically made from materials such as PVC, HDPE, copper, or galvanized steel, chosen for durability and resistance to corrosion.



### RCC Road

An RCC (Reinforced Cement Concrete) road is a highly durable and long-lasting pavement designed to withstand heavy traffic and environmental stress. Constructed using cement, fine and coarse aggregates, water, and steel reinforcement, RCC roads provide excellent strength and resistance to wear and tear.



### Domar Road

A Domar road is a type of flexible pavement made by laying a layer of compacted soil mixed with stone aggregates, sand, and gravel. It is typically used in rural or low-traffic areas due to its cost-effectiveness and ease of construction. The road is constructed by compacting the natural soil base and applying layers of graded materials to create a stable and durable surface.





**(A):** FIRST FLOOR, SHOP NO-10, ARBUDA COMPLEX, SANCHORE HIGHWAY,  
THARAD, BANASKANTHA, GUJARAT, 385565

**(A):** SHOP NO.8, ORIGIN HEIGHTS, VIHAAN NIRVANA, TP-9,  
SARGASAN, GANDHINAGAR, GUJARAT 382421

**(P):** +91 8128500599 | **(E):** INFO@NAVYUGENTERPRISE.IN  
[www.navyugenterprise.in](http://www.navyugenterprise.in)